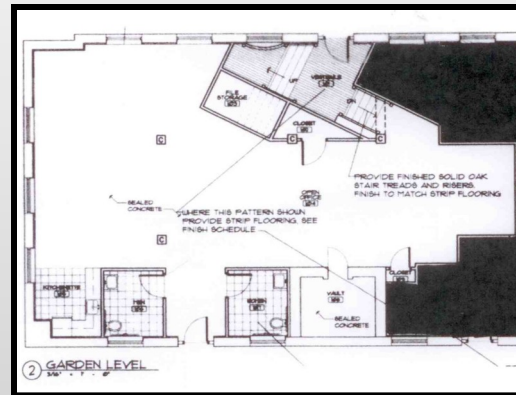


Garden Level (Ground Floor) Lease Available  
The Historic Emerson Carey Building  
9 Reserved Off-Street Parking Spaces

**D**owntown Hutchinson is the place for your business or residence. Hutchinson's most Historic Building—The Emerson Carey Building: B & Poplar, next to City Hall.



**F**ormerly the Corporate Headquarters of Emerson Carey, founder of the Carey Salt Company. Business or Residential Lease conversion available on the Garden Level (Ground Floor).

\$7.00 sq ft (raw space) up to \$10.00 sq ft (custom finish)  
Approximately 2020 sq. ft.  
ADA Accessible

[www.cowcreekinvestments.com](http://www.cowcreekinvestments.com)

620-931-6006

[cow.creek.investments@gmail.com](mailto:cow.creek.investments@gmail.com)