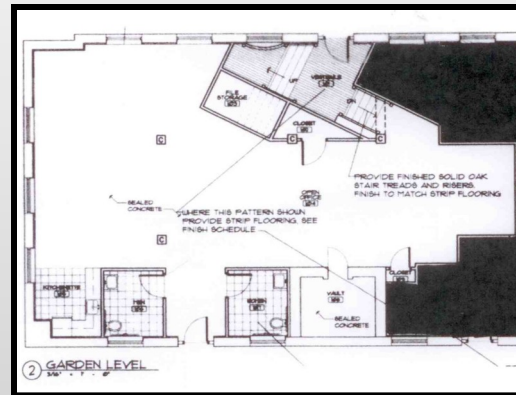


Garden Level (Ground Floor) Lease Available
The Historic Emerson Carey Building
9 Reserved Off-Street Parking Spaces

Downtown Hutchinson is the place for your business or residence. Hutchinson's most Historic Building—The Emerson Carey Building: B & Poplar, next to City Hall.



Formerly the Corporate Headquarters of Emerson Carey, founder of the Carey Salt Company. Business or Residential Lease conversion available on the Garden Level (Ground Floor).

Base Rent: \$500 a month / Custom Finish Available
Approximately 2020 sq. ft.
ADA Accessible

www.cowcreekinvestments.com

620-931-6006

cow.creek.investments@gmail.com